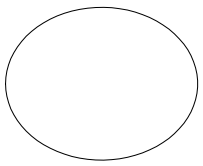
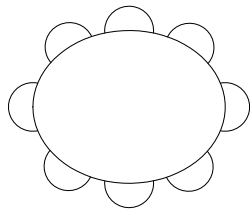


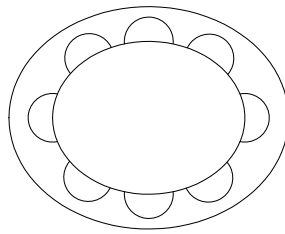
Open space



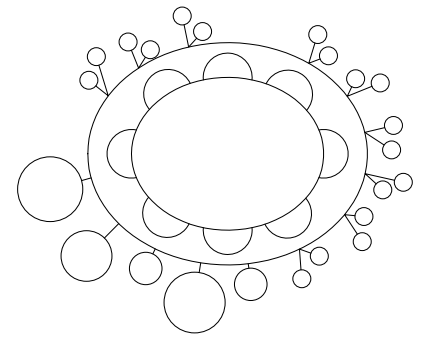
Creativity and discovery area



Relax area



Specialties and facilities area



What is the ultimate aim of education? This is a question we need to answer prior to designing a school.

We are born free. Education should ultimately be aimed at protecting and nurturing that innate freedom.

Going to school or not, this is a choice that we should be free to make. Even when we have chosen to go to school, we still have the choice of whether to learn or not. Therefore, as a starting point, a school should be an empty space, an open space for mind's children.

In this empty space, kids are allowed to roam freely or to do nothing.

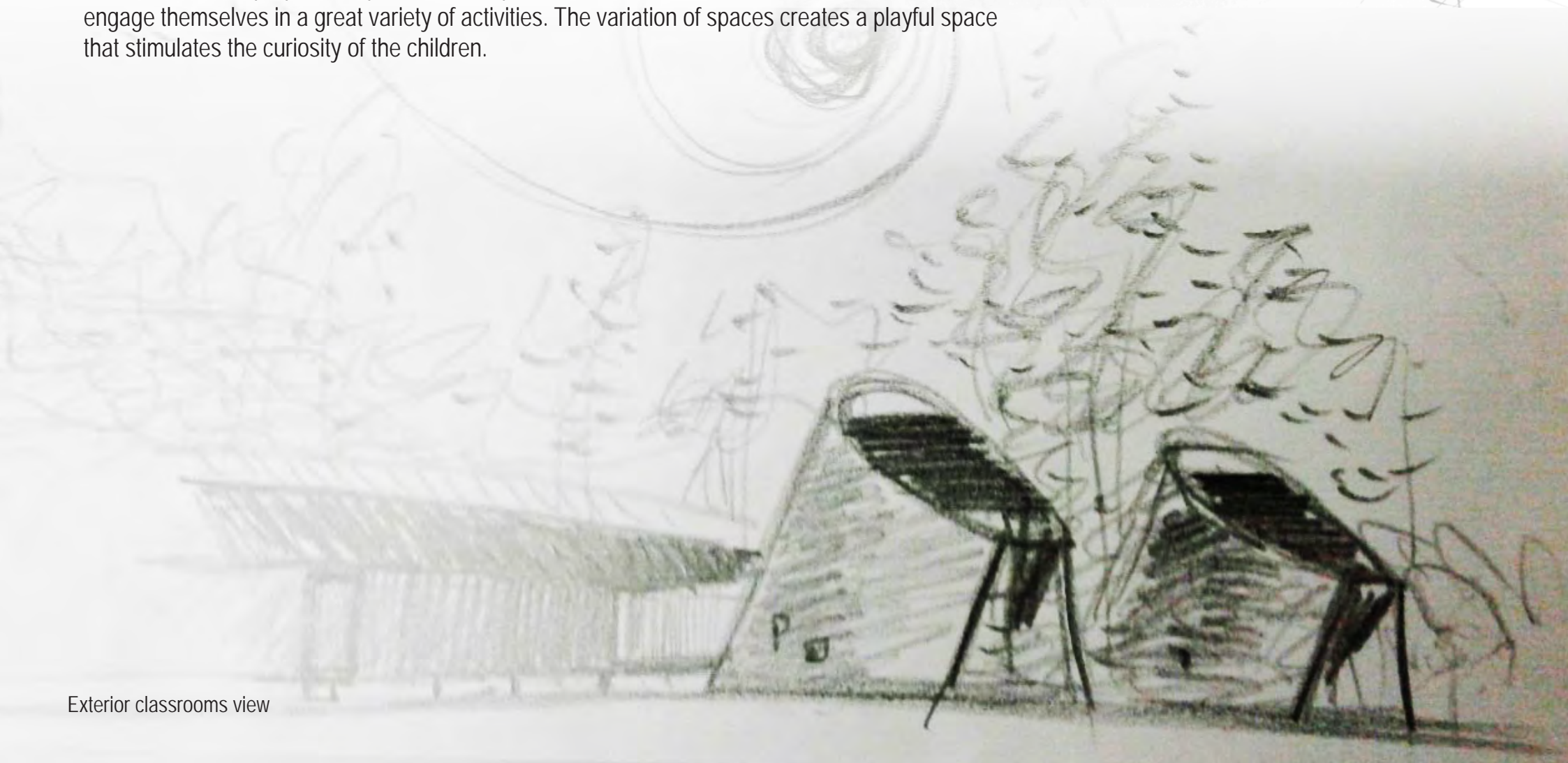
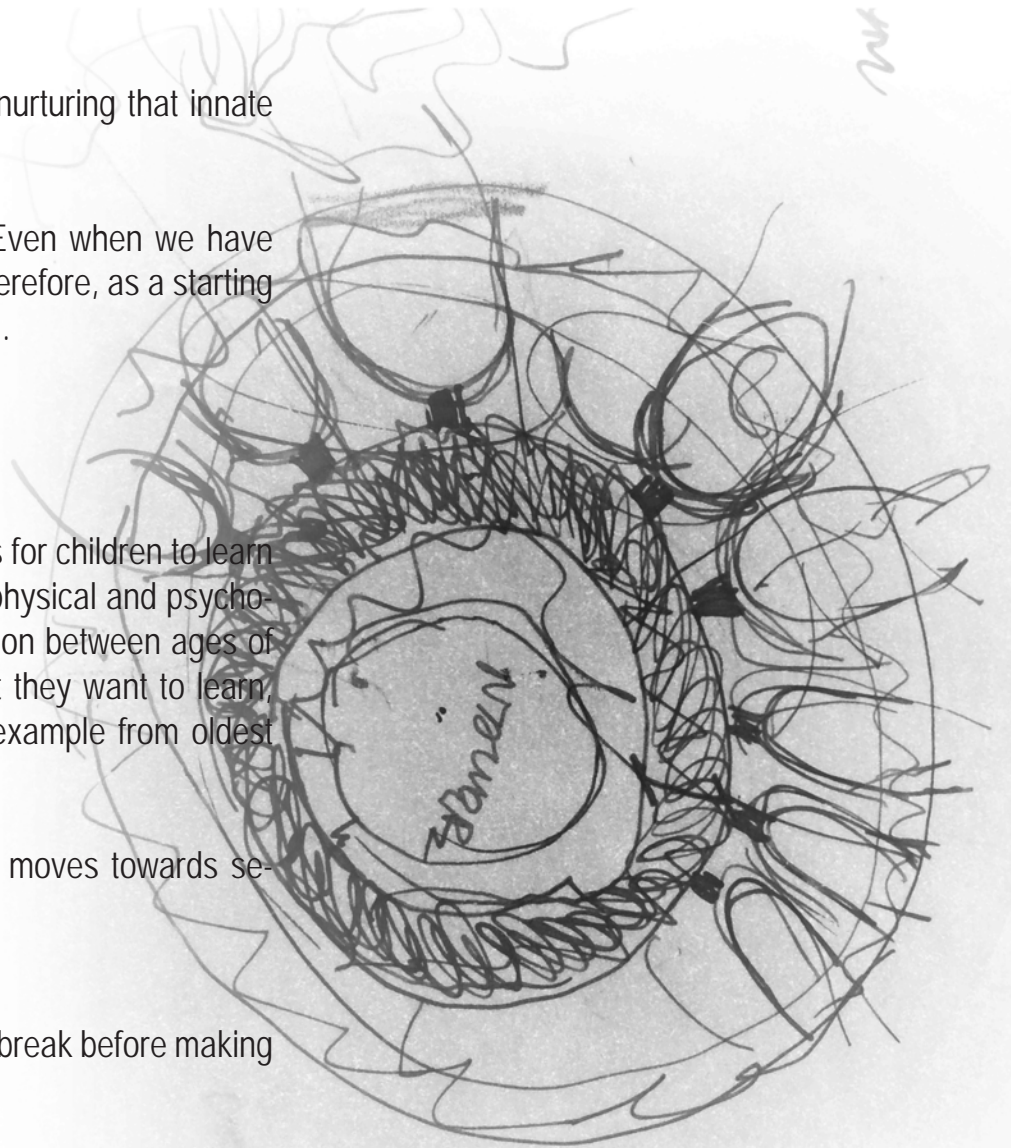
Based on this concept of freedom, this project want to offer more possibilities for children to learn by giving them the choice of what they want to study by breaking down the physical and psychological barriers. In this school, there is no schedule, and there is no distinction between ages of students. All of them can interact together by playing and by learning what they want to learn, encouraging independence and socialization. Youngest children can take example from oldest children, and everyone evolve at his pace.

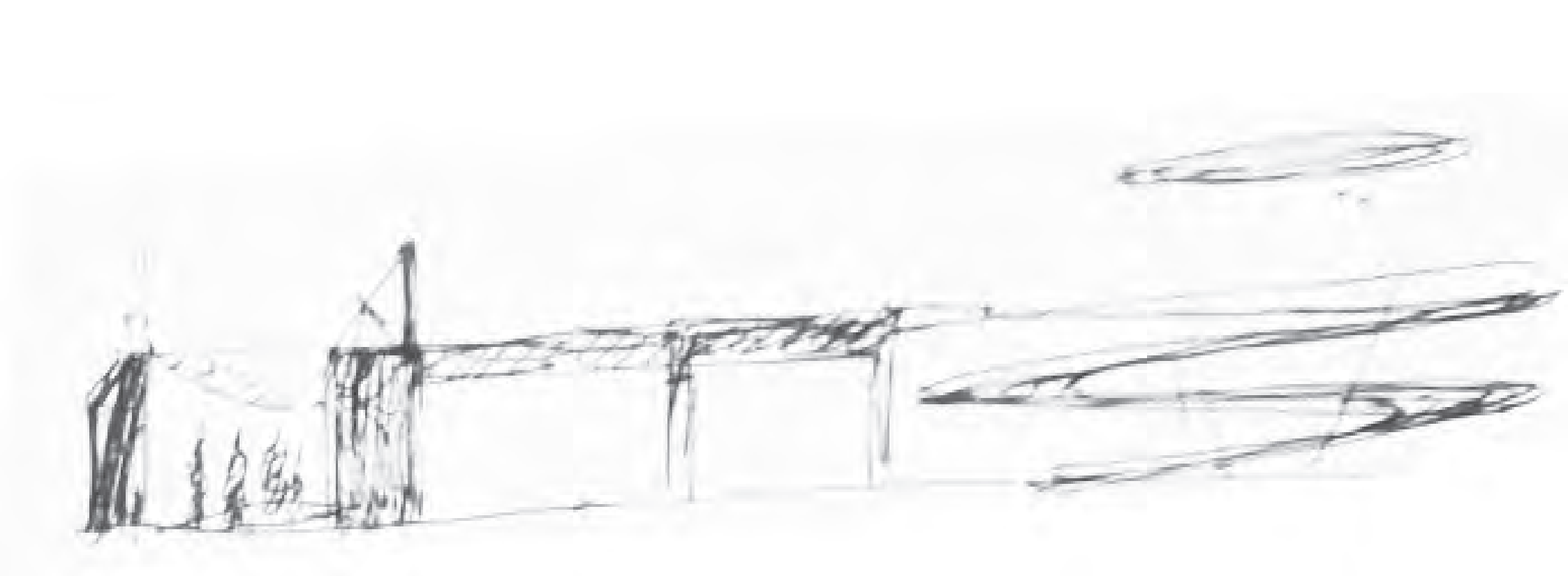
When child starts to choose, on move away from freedom, by choice one moves towards semi-empty space, be it art, music, dance or nature (non-logic choices).

Next to semi-empty space there is a silent corridor for rest, where kids take a break before making their next choice.

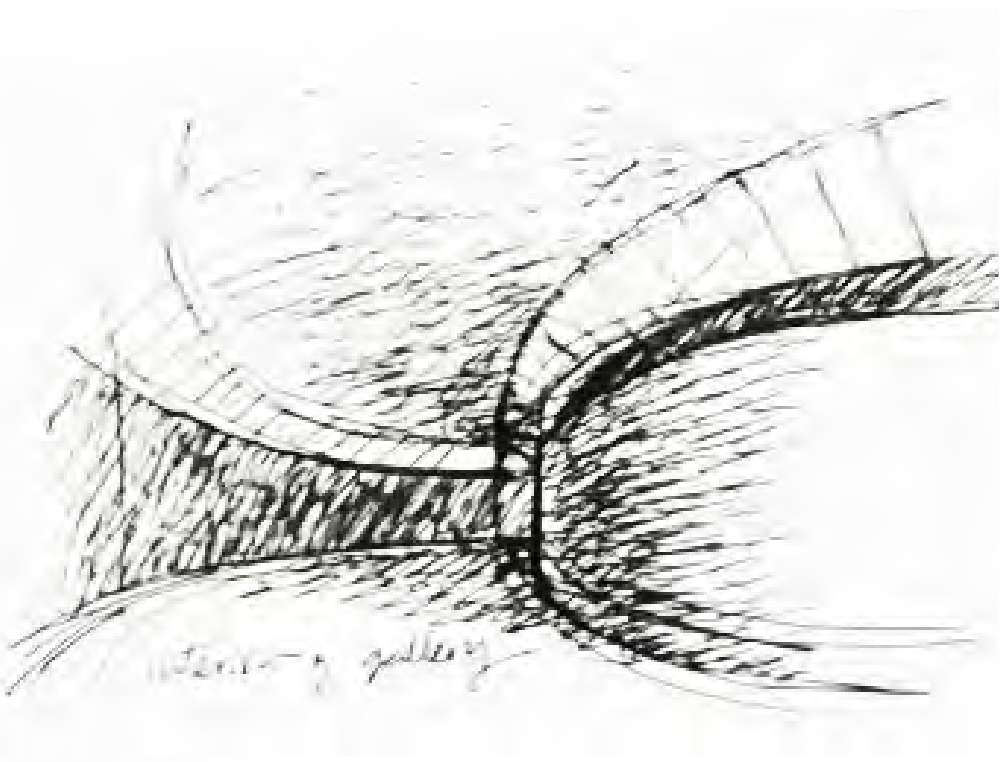
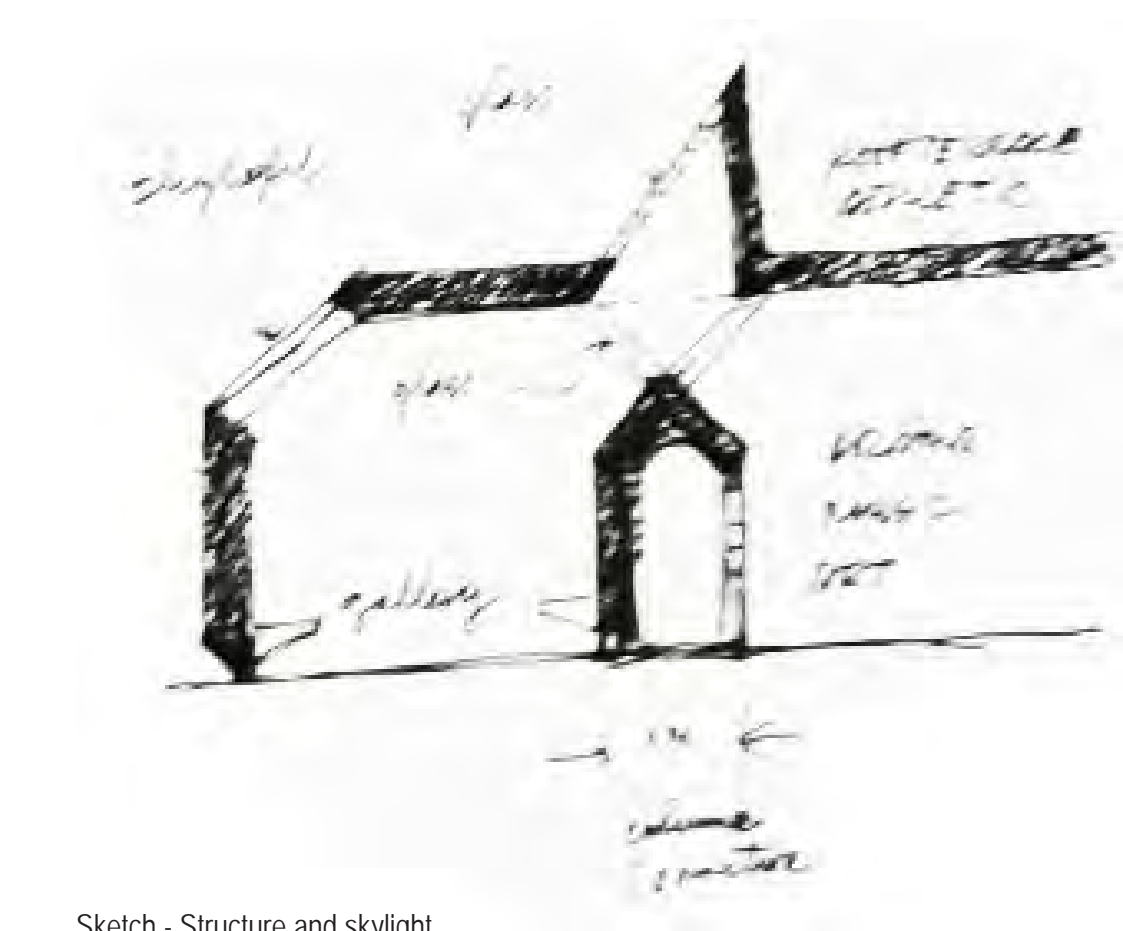
Whereas logic-based choices, once taken, lead kids to classrooms. All classrooms are open towards nature, with mezzanine floor via which kids can have direct access to a playground on the rooftop.

This architecture proposition provides an optimal educational environment where children can engage themselves in a great variety of activities. The variation of spaces creates a playful space that stimulates the curiosity of the children.



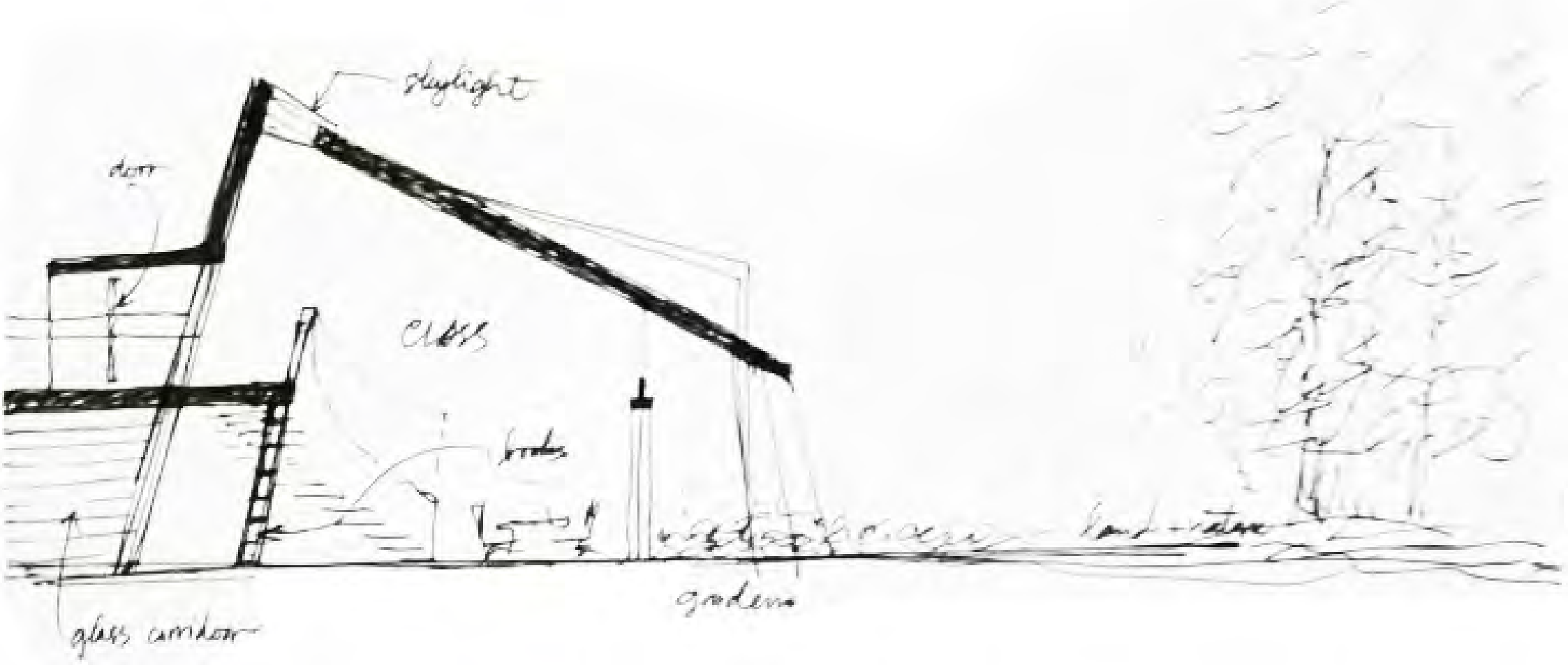


Sketch - Astronomy tower



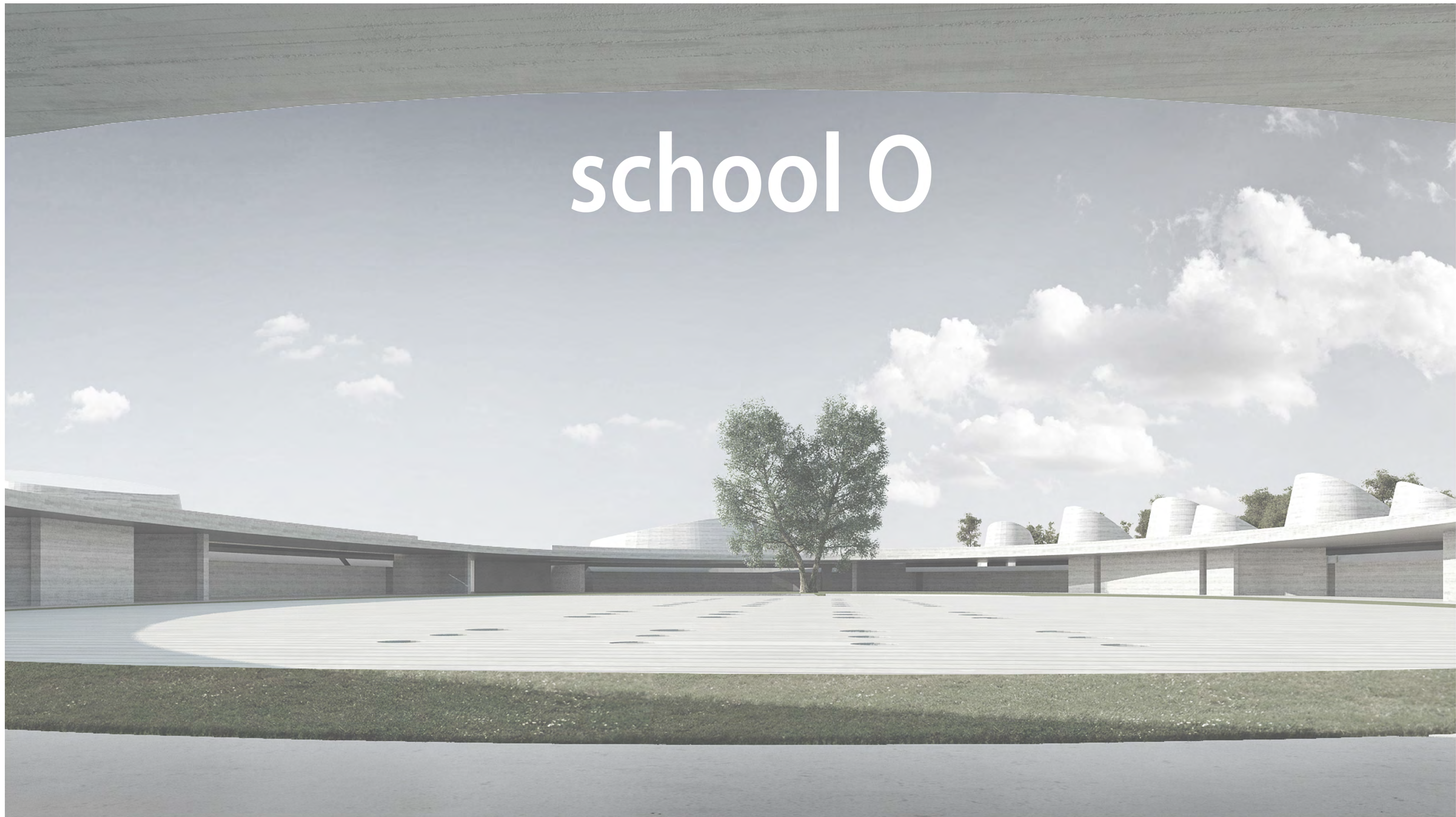
Sketch - Structure and skylight

Sketch - The Gallery



Sketch - Section of classroom

school 0



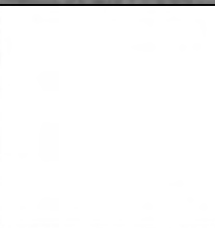
NEW SCHOOL LOSBATES

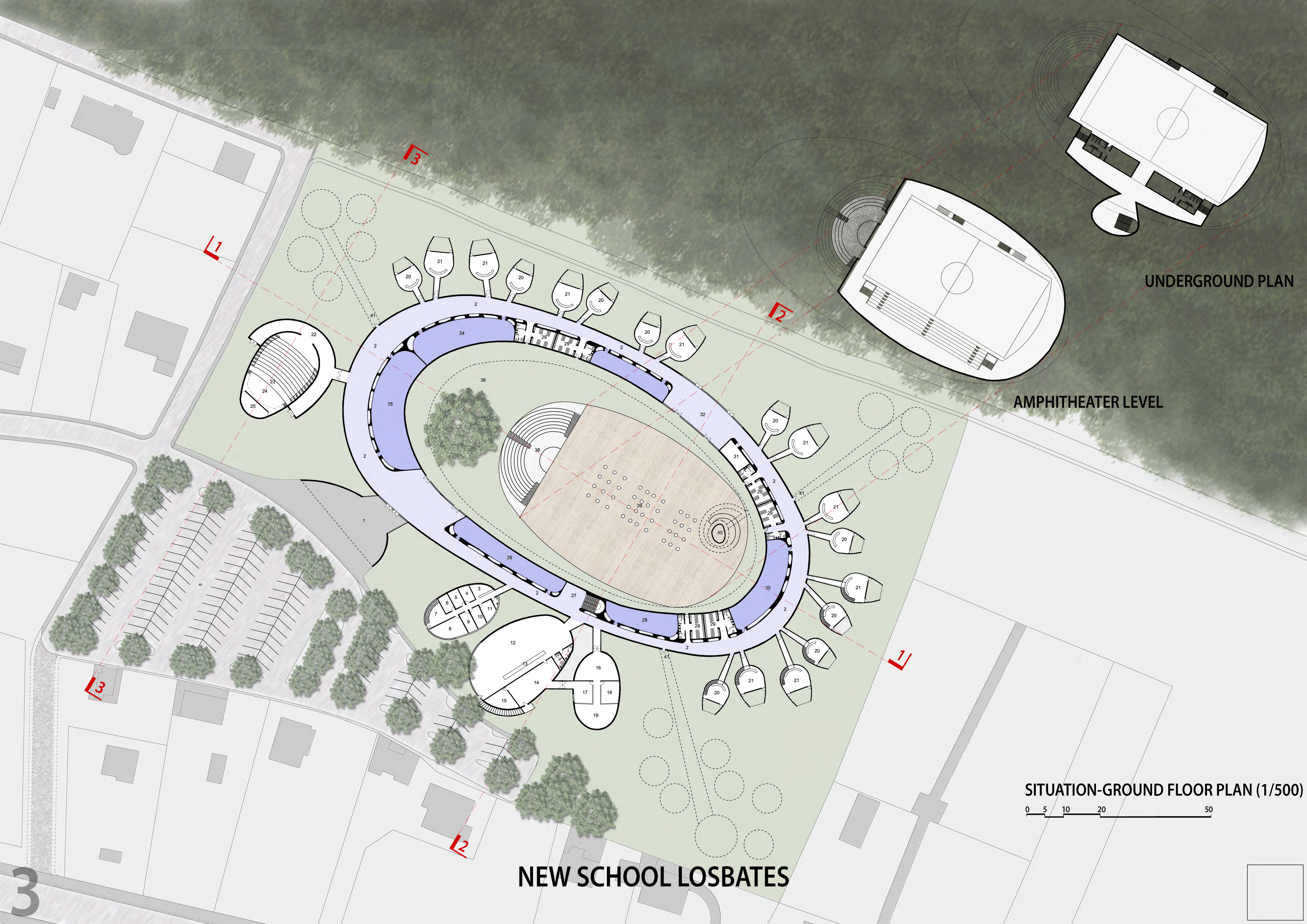




NEW SCHOOL LOSBATES

ROOF PLAN





UNDERGROUND PLAN

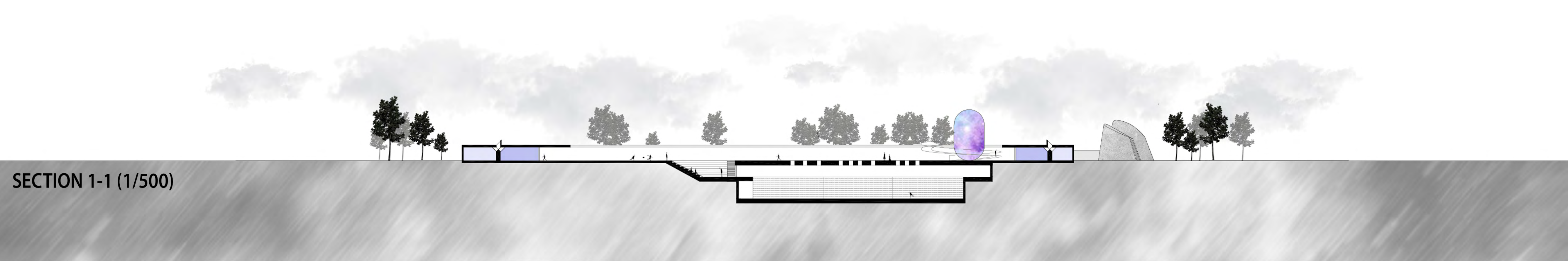
AMPHITHEATER LEVEL

SITUATION-GROUND FLOOR PLAN (1/500)

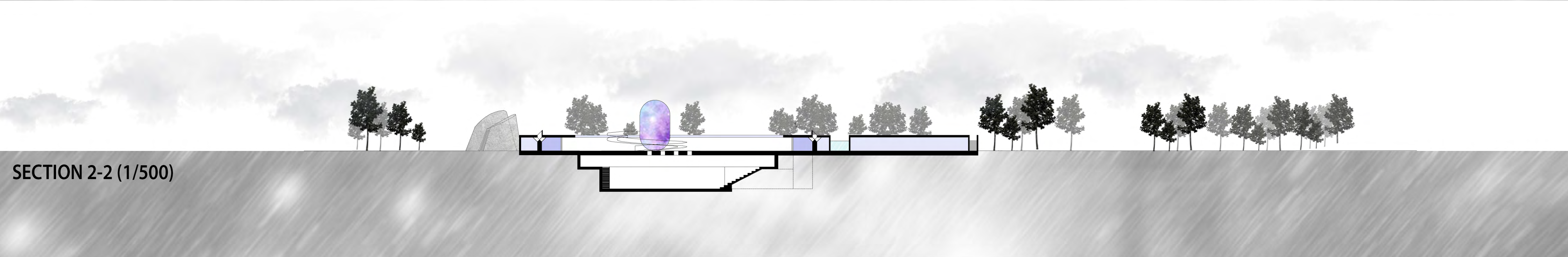
0 5 10 20 50

NEW SCHOOL LOSBATES

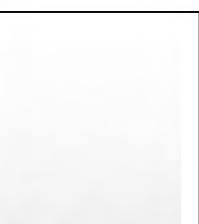
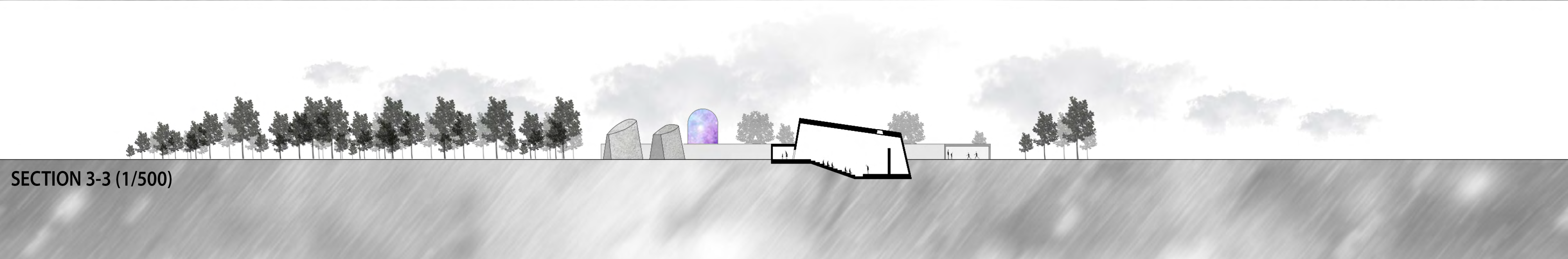
SECTION 1-1 (1/500)

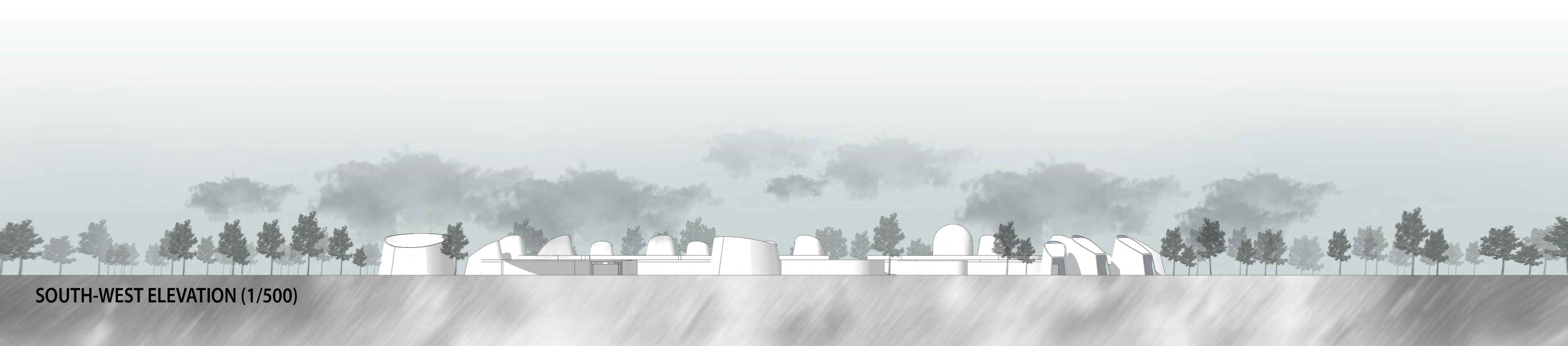


SECTION 2-2 (1/500)

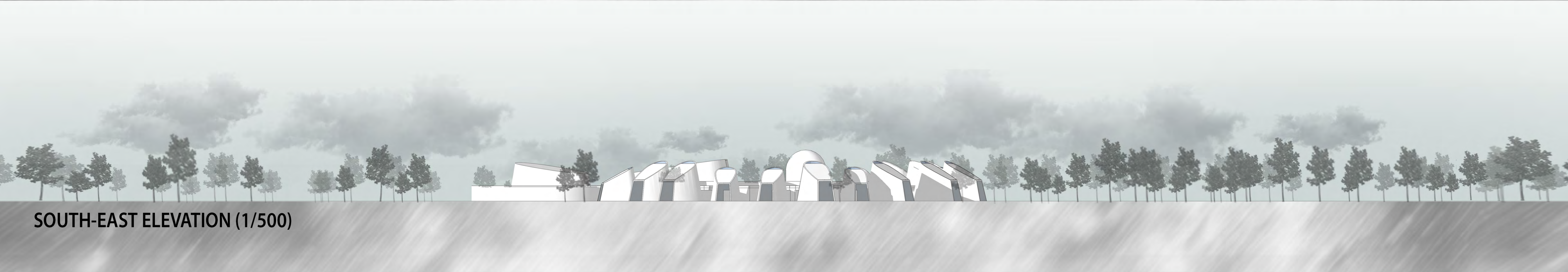


SECTION 3-3 (1/500)

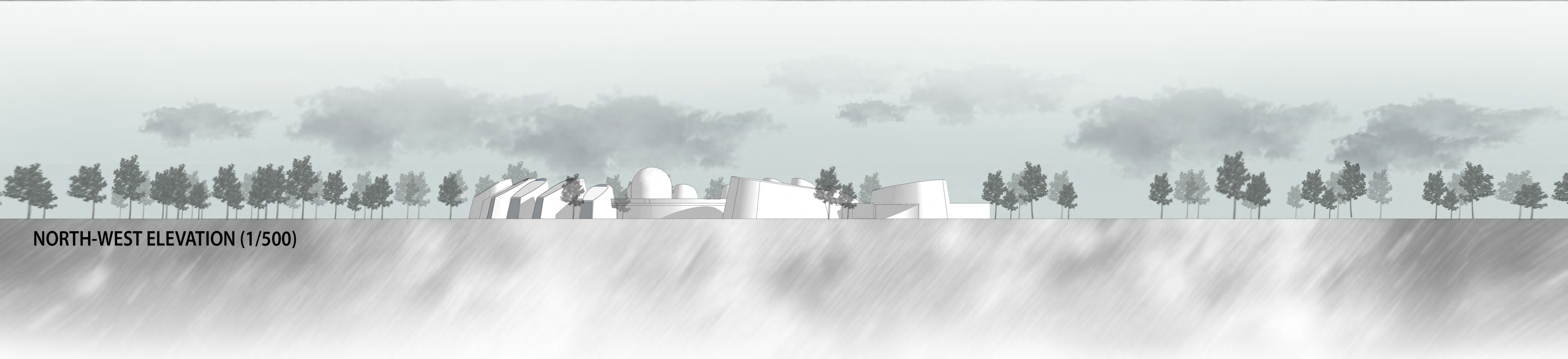




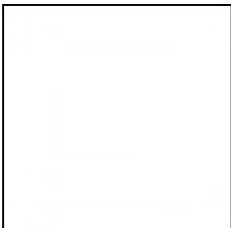
SOUTH-WEST ELEVATION (1/500)



SOUTH-EAST ELEVATION (1/500)



NORTH-WEST ELEVATION (1/500)





PERSPECTIVE-MODEL



NEW SCHOOL LOSBATES

